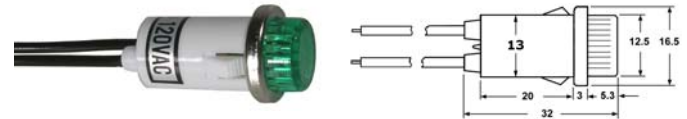




Neon indicators (internal resistor) 120VAC

- 55-452-0** Red lens 120VAC
- 55-453-0** Amber lens 120VAC
- 55-455-0** Green lens 120VAC

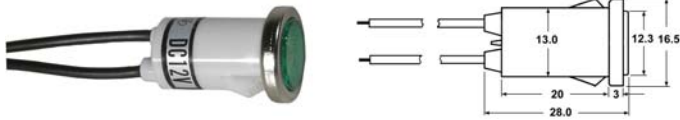
Use -1 for Display Package



Neon indicators (internal resistor) 120VAC

- 55-482-0** Red lens 120VAC
- 55-483-0** Amber lens 120VAC
- 55-485-0** Green lens 120VAC

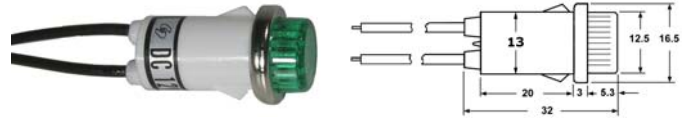
Use -1 for Display Package



Incandescent indicators 12VDC

- 55-472-0** Red lens 12VDC @ 58mA
- 55-473-0** Amber lens 12VDC @ 58mA
- 55-475-0** Green lens 12VDC @ 58mA

Use -1 for Display Package



Incandescent indicators 12VDC and 24VDC

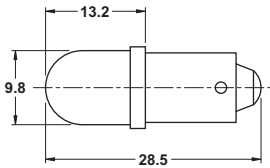
- 55-492-0** Red lens 12VDC @ 58mA
- 55-493-0** Amber lens 12VDC @ 58mA
- 55-495-0** Green lens 12VDC @ 58mA
- 55-496-0** Red lens 24VDC
- 55-497-0** Amber lens 24VDC
- 55-498-0** Green lens 24VDC

Use -1 for Display Package

LED REPLACEMENT LAMPS

T3 1/4 (10mm) Bayonet Base

Energy efficient, long lasting led replacement bulbs are suitable replacements for T3 1/4 (10mm) Bayonet Base Lamps. They are not affected with high vibration or harsh conditions like incandescent bulbs. These replacement bulbs will operate on either AC or DC voltage.



If = 20mA

Part No.	Color	Volts	MCD
55-110B-0	Blue	6V AC/DC	2800
55-110G-0	Green	6V AC/DC	1300
55-110R-0	Red	6V AC/DC	2000
55-110Y-0	Yellow	6V AC/DC	2000
55-110W-0	White	6V AC/DC	2000
55-111B-0	Blue	12V AC/DC	2800
55-111G-0	Green	12V AC/DC	1300
55-111R-0	Red	12V AC/DC	2000
55-111Y-0	Yellow	12V AC/DC	2000
55-111W-0	White	12V AC/DC	2000
55-112B-0	Blue	24V AC/DC	2800
55-112G-0	Green	24V AC/DC	1300
55-112R-0	Red	24V AC/DC	2000
55-112Y-0	Yellow	24V AC/DC	2000
55-112W-0	White	24V AC/DC	2000

7V Max

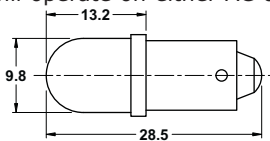
15V Max

32V Max

Use -1 for Display Package

T3 1/4 (10mm) Bayonet Base

Energy efficient, long lasting led replacement bulbs are suitable replacements for T3 1/4 (10mm) Bayonet Base Lamps. They are not affected with high vibration or harsh conditions like incandescent bulbs. These replacement bulbs will operate on either AC or DC voltage.



If = 20mA

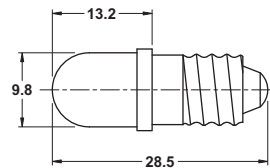
Part No.	Color	Volts	MCD
55-113B-0	Blue	120V AC/DC	2800
55-113G-0	Green	120V AC/DC	1300
55-113R-0	Red	120V AC/DC	2000
55-113W-0	White	120V AC/DC	2000
55-113Y-0	Yellow	120V AC/DC	2000

**If = 20mA
130V Max**

Use -1 for Display Package

T3 1/4 (10mm) Screw Base

These LED lamps are suitable long life replacements for T3 1/4 screw base lamps. The bottom contact is the anode (+) and the screw sleeve is the cathode. With internal resistor for the specified voltage



If = 20mA

Part No.	Color	Volts	MCD
55-120G-0	Green	6VDC	1300
55-120R-0	Red	6VDC	2000
55-120Y-0	Yellow	6VDC	2000
55-120W-0	White	6VDC	2000
55-121G-0	Green	12VDC	1300
55-121R-0	Red	12VDC	2000
55-122B-0	Blue	24VDC	2800
55-122G-0	Green	24VDC	1300
55-122Y-0	Yellow	24VDC	2000
55-122W-0	White	24VDC	2000

7V Max

15V Max

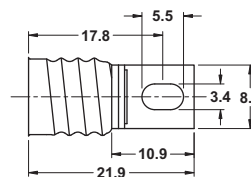
32V Max

Use -1 for Display Package

E10 (T3 1/4) SCREW BASE SOCKET



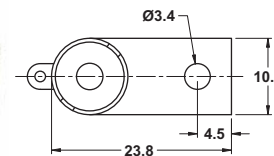
55-200-0 Bulk
55-200-4 Pkg (4)



55-202-0 Bulk
55-202-3 Pkg (3)

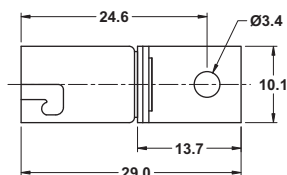
E10 (T3 1/4) BAYONET BASE SOCKETS

55-203-0 Bulk
55-203-3 Pkg (3)



With straight mounting tab.

55-204-0 Bulk
55-204-3 Pkg (3)

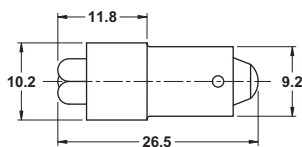


With right angle mounting tab.

SUPER BRIGHT LED REPLACEMENT LAMPS

T3 1/4 (10mm) Bayonet Base

These LED lamps are suitable long life replacements for T3 1/4 bayonet base lamps. With internal resistor for the specified voltage



***Important Note:** This series of LED bulbs are suitable for AC or DC voltage.

Part No.	Color	Volts	MCD	If
55-211B-0	Blue	12V*	4500	32mA
55-211G-0	Green	12V*	17000	32mA
55-211R-0	Red	12V*	21000	32mA
55-211Y-0	Yellow	12V*	21000	32mA
55-211W-0	White	12V*	10000	32mA
55-212G-0	Green	24V*	17000	20mA
55-212R-0	Red	24V*	21000	20mA
55-212Y-0	Yellow	24V*	21000	20mA
55-212W-0	White	24V*	10000	20mA

15V Max

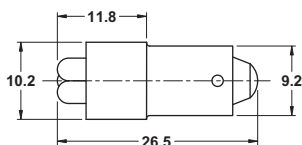
32V Max

Use -1 for Display Package

SUPER BRIGHT 120VAC/DC LED REPLACEMENT LAMPS

T3 1/4 (10mm) Bayonet Base

These LED lamps are suitable long life replacements for T3 1/4 bayonet base lamps. With internal resistor for the specified voltage



If = 4.8mA

Part No.	Color	Volts	MCD
55-214B-0	Blue	120V*	800
55-214G-0	Green	120V*	3000
55-214R-0	Red	120V*	3500
55-214Y-0	Yellow	120V*	3500
55-214W-0	White	120V*	1800

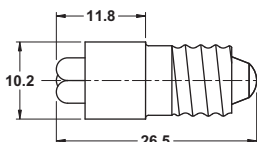
120V Max

Use -1 for Display Package

***Important Note:** This series of LED bulbs are suitable for AC or DC voltage.

T3 1/4 (10mm) Screw Base

These LED lamps are suitable long life replacements for T3 1/4 screw base lamps. With internal resistor for the specified voltage



If = 4.8mA

Part No.	Color	Volts	MCD
55-224W-0	White	120V*	1800

120V Max

Use -1 for Display Package

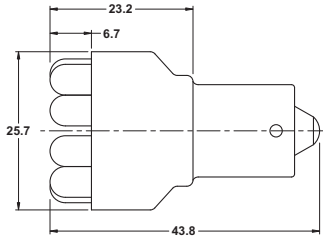
***Important Note:** This series of LED bulbs are suitable for AC or DC voltage.

SUPER BRIGHT LED CLUSTER, SINGLE AND DUAL CONTACT, REPLACEMENT LAMPS

Replaces 1156 bulb



Consists of 12 LED's



These LED lamps are suitable long life replacements for 15mm bayonet base lamps. The bottom contact is the anode (+) and the bayonet sleeve is the cathode. With internal resistor for 12VDC.

Part No.	Color	Volts	LM	MCD	If
55-256R-0	Super Red	12V	9.5	7500	80mA
55-256G-0	Ultra Green	12V	20.0	21500	80mA
55-256W-0	Super White	12V	15.0	10800	80mA

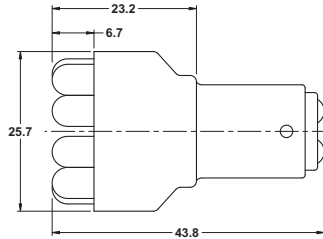
Use -1 for Display Package

14V Max

Replaces 1157 bulb



Consists of 12 LED's



These LED lamps are suitable long life replacements for 15mm bayonet base, dual contact lamps. With internal resistor for 12VDC

Part No.	Color	Volts	LM	MCD	If
55-257R-0	Super Red	12V	8.0/1.8	7500	80/25mA
55-257Y-0	Super Yellow	12V	9.5/2.2	8800	80/25mA

Use -1 for Display Package

14V Max

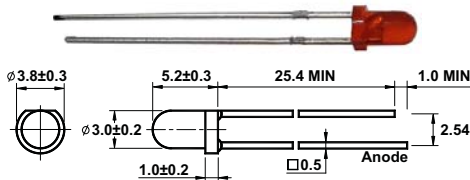
All LED's (excluding the LED indicator lamps with internal resistor) require a resistor in series to limit the current to the required specification (usually 20mA). Use Ohm's law to calculate the value of the resistor required. Most LED's have a voltage drop of 2 volts. Blue & white LED's are 3.5 - 4 volts.

$$V=IR \text{ (volts = current(amps) x resistance)}$$

For a 12VDC supply voltage @ 20mA the required resistor would be:
 $10 \text{ (volts)} / .02 \text{ (amps)} = 500 \text{ ohms}$

LED'S ARE SUITABLE FOR DC ONLY

3mm LED'S



STANDARD 3mm LED'S

Brightness rating @ 10mA

55-532-0	Red	4MCD
55-533-0	Red	35MCD
55-534-0	Yellow	6MCD
55-535-0	Green	15MCD

Use -5 for Display Package

HIGH BRIGHTNESS 3mm LED'S

Brightness rating @ 20mA

55-532HB-0	Red	150MCD
55-534HB-0	Yellow	1200MCD
55-535HB-0	Green	3000MCD
55-536HB-0	White	1200MCD

Use -3 for Display Package

SUPER BRIGHT 3mm LED'S

Brightness rating @ 20mA

55-532SB-0	Red	1800MCD
55-534SB-0	Yellow	2000MCD
55-535SB-0	Green	4000MCD
55-536SB-0	White	1800MCD
55-537SB-0	Blue	2000MCD
55-540SB-0	Pink	1800MCD

Use -1 for Display Package

EXTRA BRIGHT 3mm LED'S

Brightness rating @ 20mA

55-532XB-0	Red	5000MCD
55-534XB-0	Yellow	4000MCD
55-535XB-0	Green	5000MCD
55-536XB-0	White	2400MCD
55-537XB-0	Blue	3500MCD

Use -1 for Display Package

ULTRA BRIGHT 3mm LED'S

Brightness rating @ 20mA

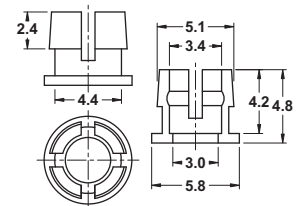
55-532UB-0	Red	7000MCD
55-535UB-0	Green	8000MCD
55-536UB-0	White	6000MCD
55-537UB-0	Blue	4500MCD

Use -1 for Display Package

3mm MOUNTING BEZEL



3mm plastic mounting bezel (1 piece)



55-530-0 Bulk
55-530-10 Disp. Pkg. (10)

LED's continued on next page.

We have many different types of LED's available on special order. If you have a requirement, please contact Mode or your local Distributor for details and order quantities.

3mm BI-COLOR LED'S



Color: Red/Green
Brightness: 15-25/5-10 mcd

55-539-0
55-539-5

Bulk
Display Package (5)

3mm R/A LED'S

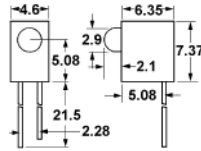


Brightness level @ 10mA

55-542-0
55-545-0

Red 3.2MCD
Green 15MCD

Use -5 for Display Package



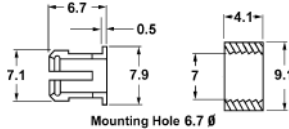
5mm LED HOLDER



Plastic 2 piece panel mount holder for 5mm LED's.

55-550-0
55-550-10

Bulk
Display Package (10)



5mm LED HOLDER (concave)



Plastic 1 piece panel mount holder for 5mm LED's.

55-550A-0
55-550A-4

Bulk
Display Package (4)

5mm LED HOLDER (convex)

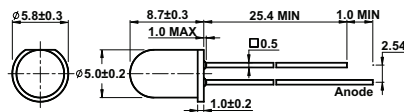


Plastic 1 piece panel mount holder for 5mm LED's.

55-550B-0
55-550B-4

Bulk
Display Package (4)

5mm LED'S



STANDARD 5mm LED'S

Brightness rating @ 10mA

55-552-0
55-553-0
55-554-0
55-555-0
55-558-0
55-558-1

Red
Orange
Yellow
Green
Blue

5-10MCD
200-400MCD
300-500MCD
100-120MCD
1000-1500MCD

Use -5 for Display Package-except 55-558

HIGH BRIGHTNESS 5mm LED'S

Brightness rating @ 20mA

55-556-0
55-556-5
55-555HB-0
55-558HB-0
55-559HB-0

Red
Display Package (5)
Green
Blue
White

2500-3500MCD
1000-2000MCD
1500-2500MCD
1500-3000MCD

Use -1 for Display Package-except 55-556

SUPER BRIGHT 5mm LED'S

Brightness rating @ 20mA

55-557-0
55-557-2
55-554SB-0
55-554SB-2
55-555SB-0
55-555SB-1
55-558SB-0
55-558SB-1
55-559SB-0
55-559SB-1

Red
Display Package (2)
Yellow
Display Package (2)
Green
Display Package
Blue
Display Package
White
Display Package

2500MCD
1000-1500MCD
7000-9000MCD
2500-3000MCD
3000-5000MCD

EXTRA BRIGHT 5mm LED'S

Brightness rating @ 20mA

55-552XB-0
55-554XB-0
55-555XB-0
55-558XB-0
55-559XB-0
55-559XB-2

Red
Yellow
Green
Blue
White

4000-6000MCD
3500MCD
8K-11KMCD
3000-4000MCD
4000-6000MCD

Display Package (2)

Use -3 for Display Package-except 55-559XB

ULTRA BRIGHT 5mm LED'S

Brightness rating @ 20mA

55-552UB-0
55-554UB-0
55-555UB-0
55-558UB-0
55-559UB-0
55-559UB-2

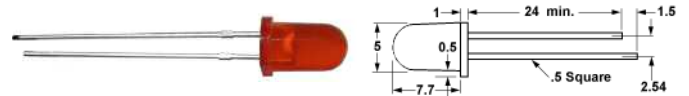
Red
Yellow
Green
Blue
White

10K-12KMCD
10K-12KMCD
15K-20KMCD
8K-10KMCD
20K-22KMCD

Display Package (2)

Use -3 for Display Package-except 55-559UB

5mm FLASHING LED

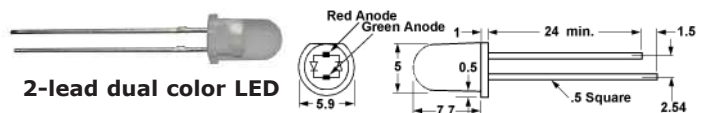


Requires no external circuitry.

55-572-0
55-572-2
55-573-0
55-573-2

Red 1000MCD (3 - 5VDC)
Display Package (2)
Red 18MCD (3.5 - 14VDC)
Display Package (2)

5mm BI-COLOR LED'S



2-lead dual color LED

55-582-0
55-582-5

Red/Green 2.2/3.5MCD
Display Package (5)

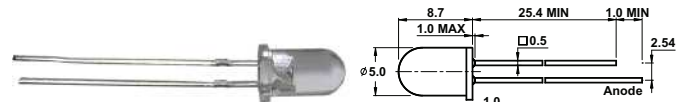


3-lead dual color LED

55-592-0
55-592-5

Red/Green 2.2/2.5MCD
Display Package (5)

5mm INFRARED LED



55-610-0
55-611-0

Emitter
Detector

Use -5 for Display Package

55-612-2

Display Package (2)

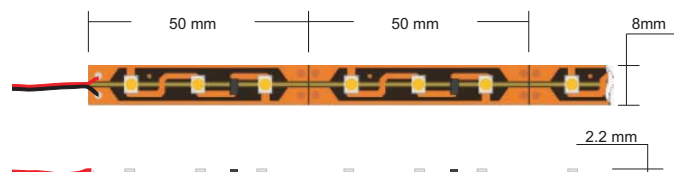
Package content: 55-610-0 and 55-611-0

INDOOR SERIES - BARE PCB LED STRIPS

Input Voltage: DC 12V Regulated
 Forward Current: 0.4A per 1m (60 pcs LED Strip)
 Power Dissipation: 4.8W per 1m (60 pcs LED Strip)
 Non-Waterproof IP20: 2 - Protected against solid objects up to 12mm³, 0 - No protection
 Operating Temperature: -20°C ~ 50°C

Very bright & low power consumption.
 Long life span LED lights, more than 50,000 hours.
 Adhesive back, peel & stick. Ideal for sign letters and channel letters, concealed lights, room lighting

Part Number	Length [m] / LED [PCS]	Material Type	Emitted Color	Lumen / meter	Dominant Wavelength [nm]	Color Temperature [CCT]	View Angle
55-7030B-0	0.5 / 30	InGaN	Blue	150	470	n/a	120
55-7030G-0	0.5 / 30	InGaN	Green	240	525	n/a	120
55-7030R-0	0.5 / 30	AlGaInP	Red	120	625	n/a	120
55-7030Y-0	0.5 / 30	AlGaInP	Yellow	120	590	n/a	120
55-7030W-0	0.5 / 30	InGaN	White	390	n/a	6000	120
55-7030WW-0	0.5 / 30	InGaN	Warm White	360	n/a	3300	120
55-7060B-0	1 / 60	InGaN	Blue	150	470	n/a	120
55-7060G-0	1 / 60	InGaN	Green	240	525	n/a	120
55-7060R-0	1 / 60	AlGaInP	Red	120	625	n/a	120
55-7060Y-0	1 / 60	AlGaInP	Yellow	120	590	n/a	120
55-7060W-0	1 / 60	InGaN	White	390	n/a	6000	120
55-7060WW-0	1 / 60	InGaN	Warm White	360	n/a	3300	120
55-70300B-0	5 / 300	InGaN	Blue	150	470	n/a	120
55-70300G-0	5 / 300	InGaN	Green	240	525	n/a	120
55-70300R-0	5 / 300	AlGaInP	Red	120	625	n/a	120
55-70300Y-0	5 / 300	AlGaInP	Yellow	120	590	n/a	120
55-70300W-0	5 / 300	InGaN	White	390	n/a	6000	120
55-70300WW-0	5 / 300	InGaN	Warm White	360	n/a	3300	120



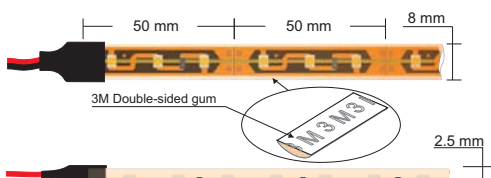
SILICONE COATED SERIES LED STRIPS

Input Voltage: DC 12V Regulated
 Forward Current: 0.4A per 1m (60 pcs LED Strip)
 Power Dissipation: 4.8W per 1m (60 pcs LED Strip)
 Waterproof IP65: 6 - Totally protected against dust, 5 - Protected against low pressure jets of water from all directions - limited ingress permitted
 Operating Temperature: -20°C ~ 50°C

Very bright & low power consumption. Long life span LED lights, more than 50,000 hours. Adhesive back, peel & stick.

Part Number	Length [m] / LED [PCS]	Material Type	Emitted Color	Lumen / meter	Dominant Wavelength [nm]	Color Temperature [CCT]	View Angle
55-7130B-0	0.5 / 30	InGaN	Blue	150	470	n/a	120
55-7130G-0	0.5 / 30	InGaN	Green	240	525	n/a	120
55-7130R-0	0.5 / 30	AlGaInP	Red	120	625	n/a	120
55-7130Y-0	0.5 / 30	AlGaInP	Yellow	120	590	n/a	120
55-7130W-0	0.5 / 30	InGaN	White	390	n/a	6000	120
55-7130WW-0	0.5 / 30	InGaN	Warm White	360	n/a	3300	120
55-7160B-0	1 / 60	InGaN	Blue	150	470	n/a	120
55-7160G-0	1 / 60	InGaN	Green	240	525	n/a	120
55-7160R-0	1 / 60	AlGaInP	Red	120	625	n/a	120
55-7160Y-0	1 / 60	AlGaInP	Yellow	120	590	n/a	120
55-7160W-0	1 / 60	InGaN	White	390	n/a	6000	120
55-7160WW-0	1 / 60	InGaN	Warm White	360	n/a	3300	120
55-71300B-0	5 / 300	InGaN	Blue	150	470	n/a	120
55-71300G-0	5 / 300	InGaN	Green	240	525	n/a	120
55-71300R-0	5 / 300	AlGaInP	Red	120	625	n/a	120
55-71300Y-0	5 / 300	AlGaInP	Yellow	120	590	n/a	120
55-71300W-0	5 / 300	InGaN	White	390	n/a	6000	120
55-71300WW-0	5 / 300	InGaN	Warm White	360	n/a	3300	120
55-7130RGB-0 *	5 / 150	n/a	RGB (Multi)	R: 60 G: 120 B: 75	n/a	n/a	120
55-7160RGB-0 *	5 / 300	n/a	RGB (Multi)	R: 120 G: 240 B: 150	n/a	n/a	120

* RGB Multi Color. DMX compatible. RGB Controller is required (55-725-0)



RGB CONTROLLER



- 9 pattern adjustable controller
- Rated current: 8A
- Rated load current: 8A x 3CHANNEL
- Working Voltage: 12VDC
- Working temperature: -20°C ~ 60°C
- Size: 107x65x24mm
- 3 AAA Batteries Included

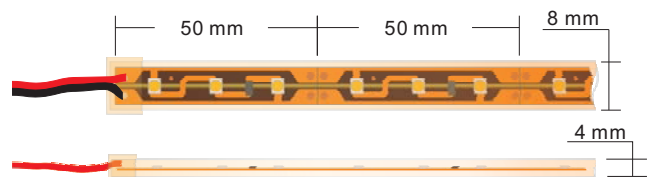
55-725-0

SILICONE SLEEVE SERIES LED STRIPS

Input Voltage: DC 12V Regulated
 Forward Current: 0.4A per 1m (60 pcs LED Strip)
 Power Dissipation: 4.8W per 1m (60 pcs LED Strip)
 Waterproof IP67: 6 - Totally protected against dust, 7 - Protected against the effect of immersion between 15cm and 1m
 Operating Temperature: -20°C ~ 50°C

Very bright & low power consumption. Long life span LED lights, more than 50,000 hours.

Part Number	Length [m] / LED [PCS]	Material Type	Emitted Color	Lumen / meter	Dominant Wavelength [nm]	Color Temperature [CCT]	View Angle
55-7230B-0	0.5 / 30	InGaN	Blue	150	470	n/a	120
55-7230G-0	0.5 / 30	InGaN	Green	240	525	n/a	120
55-7230R-0	0.5 / 30	AlGaInP	Red	120	625	n/a	120
55-7230Y-0	0.5 / 30	AlGaInP	Yellow	120	590	n/a	120
55-7230W-0	0.5 / 30	InGaN	White	390	n/a	6000	120
55-7230WW-0	0.5 / 30	InGaN	Warm White	360	n/a	3300	120
55-7260B-0	1 / 60	InGaN	Blue	150	470	n/a	120
55-7260G-0	1 / 60	InGaN	Green	240	525	n/a	120
55-7260R-0	1 / 60	AlGaInP	Red	120	625	n/a	120
55-7260Y-0	1 / 60	AlGaInP	Yellow	120	590	n/a	120
55-7260W-0	1 / 60	InGaN	White	390	n/a	6000	120
55-7260WW-0	1 / 60	InGaN	Warm White	360	n/a	3300	120
55-72300B-0	5 / 300	InGaN	Blue	150	470	n/a	120
55-72300G-0	5 / 300	InGaN	Green	240	525	n/a	120
55-72300R-0	5 / 300	AlGaInP	Red	120	625	n/a	120
55-72300Y-0	5 / 300	AlGaInP	Yellow	120	590	n/a	120
55-72300W-0	5 / 300	InGaN	White	390	n/a	6000	120
55-72300WW-0	5 / 300	InGaN	Warm White	360	n/a	3300	120



End Cap and Clip for 55-72X and 55-73X Series

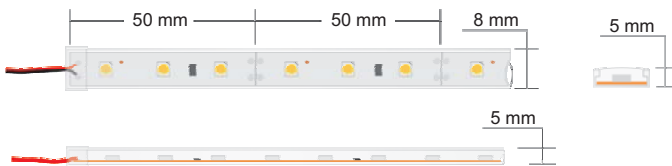


SILICONE ENCAPSULATED SERIES LED STRIPS

Input Voltage: DC 12V Regulated
 Forward Current: 0.4A per 1m (60 pcs LED Strip)
 Power Dissipation: 4.8W per 1m (60 pcs LED Strip)
 Waterproof IP68: 6 - Totally protected against dust, 8 - Protected against long periods of immersion under pressure
 Operating Temperature: -20°C ~ 50°C

Very bright & low power consumption. Long life span LED lights, more than 50,000 hours.

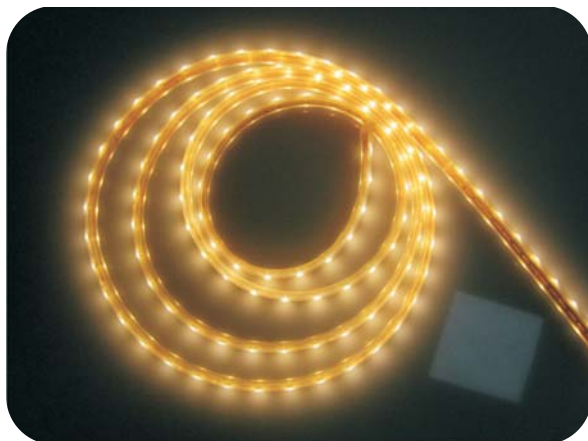
Part Number	Length [m] / LED [PCS]	Material Type	Emitted Color	Lumen / meter	Dominant Wavelength [nm]	Color Temperature [CCT]	View Angle
55-7330B-0	0.5 / 30	InGaN	Blue	150	470	n/a	120
55-7330G-0	0.5 / 30	InGaN	Green	240	525	n/a	120
55-7330R-0	0.5 / 30	AlGaInP	Red	120	625	n/a	120
55-7330Y-0	0.5 / 30	AlGaInP	Yellow	120	590	n/a	120
55-7330W-0	0.5 / 30	InGaN	White	390	n/a	6000	120
55-7330WW-0	0.5 / 30	InGaN	Warm White	360	n/a	3300	120
55-7360B-0	1 / 60	InGaN	Blue	150	470	n/a	120
55-7360G-0	1 / 60	InGaN	Green	240	525	n/a	120
55-7360R-0	1 / 60	AlGaInP	Red	120	625	n/a	120
55-7360Y-0	1 / 60	AlGaInP	Yellow	120	590	n/a	120
55-7360W-0	1 / 60	InGaN	White	390	n/a	6000	120
55-7360WW-0	1 / 60	InGaN	Warm White	360	n/a	3300	120
55-73300B-0	5 / 300	InGaN	Blue	150	470	n/a	120
55-73300G-0	5 / 300	InGaN	Green	240	525	n/a	120
55-73300R-0	5 / 300	AlGaInP	Red	120	625	n/a	120
55-73300Y-0	5 / 300	AlGaInP	Yellow	120	590	n/a	120
55-73300W-0	5 / 300	InGaN	White	390	n/a	6000	120
55-73300WW-0	5 / 300	InGaN	Warm White	360	n/a	3300	120



End Cap and Clip for 55-72X and 55-73X Series



LED STRIP DIMMER



- Single color LED Strips Dimmer (not for 55-7130RGB-0 or 55-7160RGB-0)
- Maximum up to 18A current output
- Working Voltage: 12VDC
- Working temperature: -20°C ~ 60°C
- Size: 107x55x24mm
- Sturdy aluminum frame

55-724-0

8MM SOLDERLESS LED STRIP CONNECTOR



8mm Solderless LED Strip Connector with 6" leads.

55-740-0 Bulk

10MM SOLDERLESS RGB STRIP CONNECTOR



10mm Solderless RGB LED Strip Connector with 6" leads.

55-750-0 Bulk



8MM SOLDERLESS LED STRIP JOINER

55-742-0 Bulk



10MM SOLDERLESS RGB STRIP JOINER

55-752-0 Bulk

8MM SNAP-ON LED STRIP CONNECTOR



8mm Snap-on LED Strip Connector with 6" leads.

55-744-0 Bulk

10MM SNAP-ON LED STRIP CONNECTOR



10mm Snap-on LED Strip Connector with 6" leads.

55-745-0 Bulk



8MM SNAP-ON LED STRIP JOINER

55-746-0 Bulk



10MM SNAP-ON LED STRIP JOINER

55-747-0 Bulk



10MM SNAP-ON RGB LED STRIP JOINER

55-756-0 Bulk

8MM SNAP-ON LED STRIP JOINER



8mm Snap-on LED Strip Joiner with 6" leads.

55-748-0 Bulk

10MM SNAP-ON RGB LED STRIP JOINER



10mm Snap-on RGB LED Strip Joiner with 6" leads.

55-758-0 Bulk

Note: 8mm Connectors are for standard single color LED Strips. 55-750-0, 55-752-0, 55-756-0 and 55-758-0 10mm Connectors are for RGB LED Strips.